



Flight Plan & Site Survey

Created using **RPAS Wilco®**

Reference No:	0B110E
Title:	Oakville MFC - Drumquin Park 04-08-2025
Pilot Name:	
Pilot Certificate:	
Flight Start:	April 8, 2025 1:26 PM
Flight End:	April 8, 2025 3:26 PM
Flight Area (Latitude):	43° 32' 0.74" N (43.534)
Flight Area (Longitude):	79° 47' 12.98" W (-79.787)
Altitude - Radius:	Alt: 400 ft - Rad: 926.0 m (0.5 nm)
Classification:	UNCONTROLLED
FIR - Contact:	CZYZ - 905-676-4509

Please ensure you received all required authorizations prior to flight.

Disclaimer

This Site Survey was created using RPAS Wilco by AIM Robotics. The flight plan contained is intended only for RPAS flights on the date/time and location specified. The user accepts all responsibility for the accuracy and completeness of the information contained.

For the complete Terms & Conditions, see

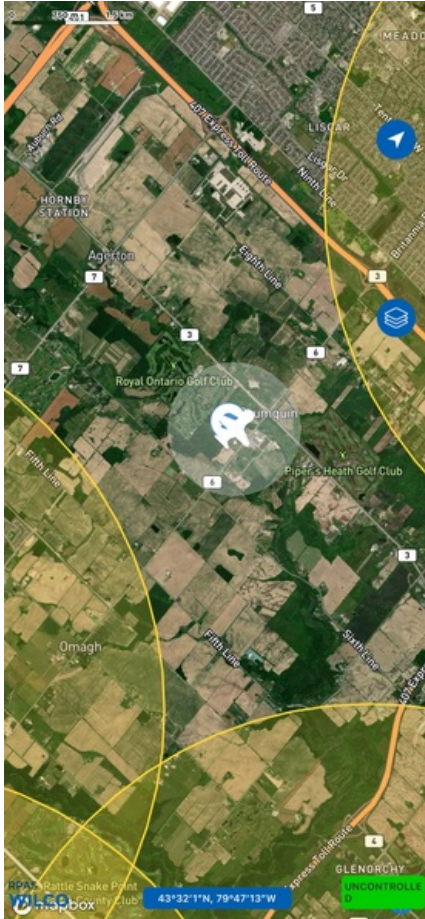
<https://rpaswilco.com/#/tnc>

Included

- Site Survey
- Obstacles (if available)
- Nearby Aerodromes
- Canadian Aviation Regulations
- GFA
- Aerodrome Supplements
 - METAR & TAF (if available)
 - NOTAMs
 - CFS





Flight Map



RPAS Specification

- **Manufacturer:**
MAAC
- **Model:**
Model Airplane (sherryd)
- **Registration Number:**
c0000000000
- **Eligible for advanced operations:**
Yes
- **Manufacturer RPAS safety assurance:**
 - Controlled Airspace: Yes
 - Near People: N/A
 - Over People: N/A

MAP Details

	Latitude	Longitude
 MODEL	43° 32' 0.74" N (43.534)	79° 47' 12.98" W (-79.787)
 Pilot	43° 32' 4.34" N (43.5345)	79° 47' 16.58" W (-79.7879)



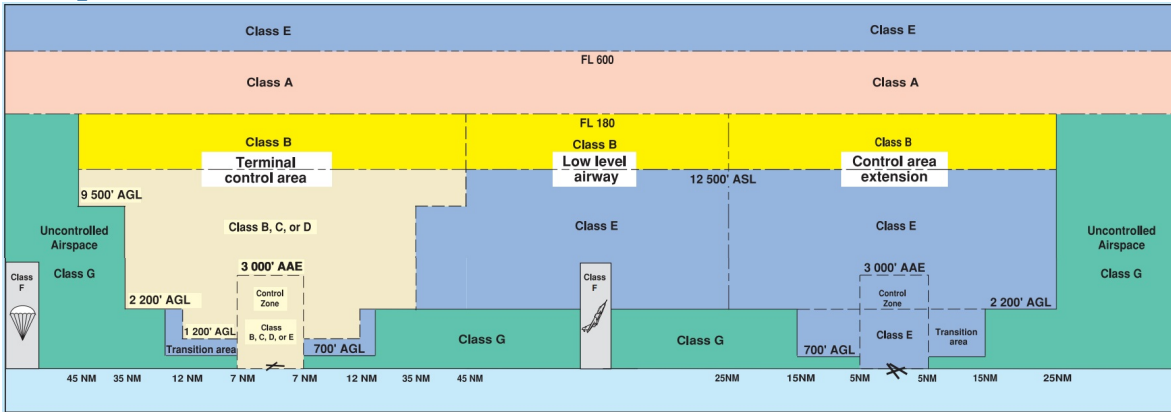
Sign Up Today!



Canada's **#1** FREE Drone Training Hub



Airspace Classification



Overlying Airspaces

Class	Name	Floor	Ceiling
E	Southern Ontario Low Level Control Area CAE	2500MSL	6500MSL
E	Southern Ontario Low Level Control Area CAE	6500MSL	12500MSL
B	Southern Ontario Low Level Control Area CAE	12500MSL	18000MSL
E	Toronto XPNDR MANDTRY	6500MSL	12500MSL
E	Windsor, ON TA	700AGL	12500MSL
B	Windsor, ON TA	12500MSL	18000MSL
C	Toronto, ON TCA	2500MSL	3500MSL
C	Toronto, ON TCA	3500MSL	4500MSL
C	Toronto, ON TCA	4500MSL	12500MSL
C	Toronto, ON TCA	1700MSL	2000MSL
C	Toronto, ON TCA	2000MSL	2500MSL
E	T781 Airway	2200AGL	12500MSL
B	T781 Airway	12500MSL	18000MSL

Nearest Aerodromes & Distance from Operation

TORONTO (MISSISSAUGA CREDIT VALLEY HOSPITAL) (CPK6 - HELIPORT - Cert)	Lat: 43.561	Long: -79.703	7.422KM	4.01NM NE
MILTON (DISTRICT HOSPITAL) (CPY2 - HELIPORT - Cert)	Lat: 43.498	Long: -79.868	7.638KM	4.12NM SW
BURLINGTON EXECUTIVE (CZBA - AERODROME - Reg)	Lat: 43.441	Long: -79.85	11.479KM	6.2NM SW
MILTON (AFI) (CMH2 - HELIPORT - Reg)	Lat: 43.532	Long: -79.903	9.358KM	5.05NM W
OAKVILLE (TRAFALGAR MEM HOSP) (CTM9 - HELIPORT - Cert)	Lat: 43.449	Long: -79.764	9.581KM	5.17NM S

ONTARIO

AERODROME/FACILITY DIRECTORY

TORONTO (MISSISSAUGA CREDIT VALLEY HOSP) ON (Heli)

CPK6


REF	N43 33 41 W79 42 10 10°W (2019) UTC-5(4) Elev 523' VTA A5000	
OPR	Credit Valley Hosp 905-813-2200 Cert PPR	
FLT PLN	FIC London 866-WXBRIEF (Toll free within Canada) or 866-541-4104 (Toll free within Canada & USA)	
HELI DATA	FATO/TLOF 108' dia CONC Safety Area 144' dia Max heli overall length 57.5' RCR Opr	
LIGHTING	DR RY(LO) RF(FL) ARCAL-123.2 type K one intensity only, key mic 3 times to turn floodlights off	
COMM	TWR Toronto 118.35 118.7 A/G Ambulance dispatch 129.275	
PRO	Arr/dep 078° fr heli (H1), day/night use. Arr/dep 245° fr heli (H1), day/night use.	
CAUTION	Chimney SSW aprx 150 AGL. Communications twr SW aprx 100 AGL. P-lines N & W all lgtd & marked. Bldgs 0.3NM SW. Trees S to 100 AGL.	

ONTARIO

AERODROME/FACILITY DIRECTORY

MILTON (DISTRICT HOSP) ON (Heli)

CPY2

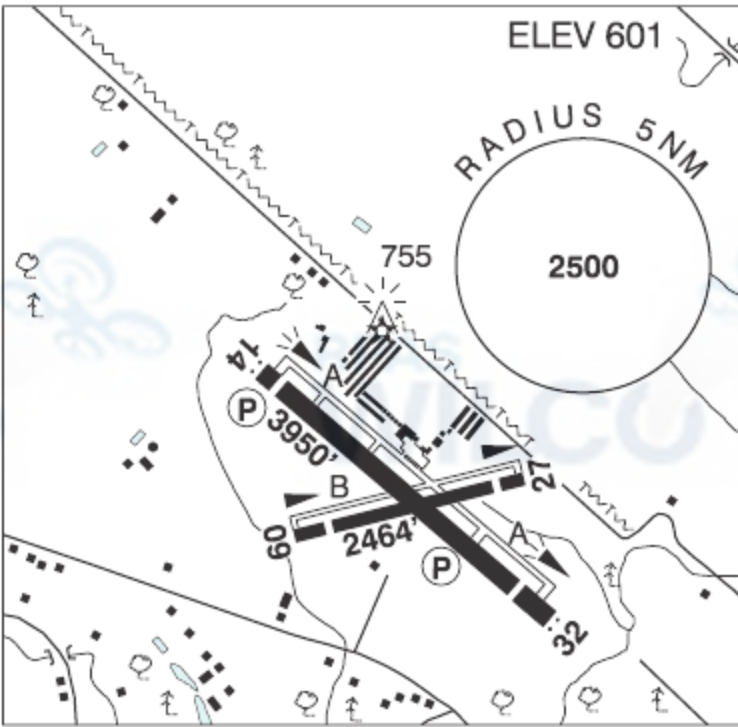
REF	N43 29 55 W79 52 04 Adj S 10°W (2016) UTC-5(4) Elev 663' VTA A5000	
OPR	Halton Health Care 905-845-2571 Cert PPR	
FLT PLN	FIC London 866-WXBRIEF (Toll free within Canada) or 866-541-4104 (Toll free within Canada & USA)	
HELI DATA		
RCR	FATO 85' dia ASPH TLOF 33' dia CONC Safety Area 115' dia Max heli overall length 57.4' Opr	
LIGHTING	RY(LO) green RF(FL)	
PRO	Arr/dep 045°-135° fr heli, slope 16% (H2), day/night use VFR only.	
CAUTION	Hosp bldg SW of heli.	

ONTARIO

AERODROME/FACILITY DIRECTORY

BURLINGTON EXECUTIVE ON

CZBA

REF	N43 26 29 W79 51 01 10°W (2013) UTC-5(4) Elev 601' VTA A5000 LO6 T2 CAP	
OPR	Vince Rossi 905-336-4010 (Day), 416-617-2428 (Night) Reg	
PF	C-1,2,3,4,5,6,7	
CUST	AOE/CAN	
FLT PLN	<div>FICLondon 866-WXBRIEF (Toll free within Canada) or 866-541-4104 (Toll free within Canada & USA)</div> <div>WXAUTO (see COMM) WxCam</div>	
SERVICES		
FUEL	100LL, JA cardlock dispenser	
OIL	100	
S	1,2,3,4,5	
RWY DATA	Rwy 14(141°)/32(321°) 3950x100 ASPH Rwy 14 down 0.61% Thld 14 displ 181'. Thld 32 displ 409'. Rwy 09(086°)/27(266°) 2464x50 asphalt Rwy 09 down 0.42% Thld 09 displ 328'. Thld 27 displ 254'	
RCR	Opr 13-23Z± or Spectrum Airways 905-336-4010	
LIGHTING	14-AS(TE LO) AP, 32-AS(TE LO) AP ARCAL-123.5 type J.	
COMM		
ATF	UNICOM ltd hrs O/T tfc 123.5 5NM below 2500 ASL	
TML	Toronto 119.3	
AUTO	122.55	
PRO	Circuit hgt 1500' ASL. Rgt hand circuits Rwy 27 & 32 (CAR 602.96). As soon as practicable after take-off fr Rwy 14 turn left 5° to avoid noise sensitive area. Helicopters follow fixed-wing circuit procedures. Rwy 14/32 preferential.	
CAUTION	50 ft trees on apch to Rwy 32 loc aprx 400' from thld of Rwy 32. Abn on top of twr 755 ASL (148 AGL) aprx 1635' N A/D. No runout area avbl beyond end of Rwy 09, 14, 27. Occasional wildlife activity.	

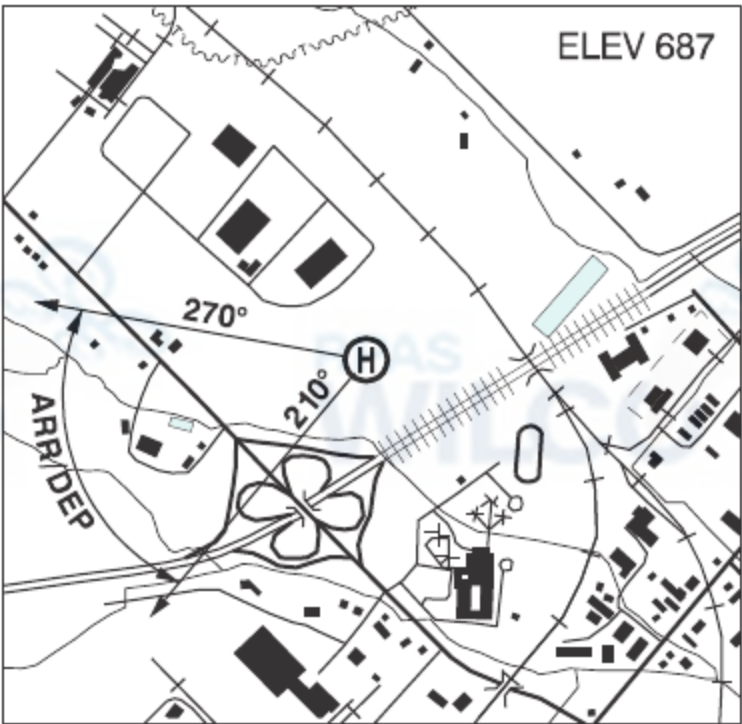
ONTARIO

AERODROME/FACILITY DIRECTORY

MILTON (AFI) ON (Heli)

CMH2

REF	N43 31 56 W79 54 10 Adj N 10°W UTC-5(4) Elev 687' VTA A5000
OPR	AFI Group International Inc 905-693-0746 Reg PN
PF	A-1 B-2,3,4,5
FLT PLN FIC	London 866-WXBRIEF (Toll free within Canada) or 866-541-4104 (Toll free within Canada & USA)
HELI DATA RCR	60' x 60' CONC 80' x 80' rstd max length 40' Opr
LIGHTING	RY(LO)
COMM VFR ADV	Toronto 119.3
PRO	Arr/dep btwn 210°-270° fr heli.
CAUTION	Numerous twr within 5NM.



ONTARIO

AERODROME/FACILITY DIRECTORY

OAKVILLE (TRAFALGAR MEM HOSP) ON (Heli)

CTM9

REF	N43 26 56 W79 45 49 3.5W 10°W (2015) UTC-5(4) Elev 531' VTA A5000	
OPR	Halton Health Care 905-845-2571 Cert PPR	
FLT PLN FIC	London 866-WXBRIEF (Toll free within Canada) or 866-541-4104 (Toll free within Canada & USA)	
HELI DATA RCR	FATO/TLOF 84' dia ASPH Safety Area 115' dia Max heli overall length 57.4' Opr	
LIGHTING	RY(LO) green	
COMM ATF VFR ADV	tfc 123.5 4NM below 2500 ASL Toronto 119.3	
PRO	Arr/dep 147°-192° fr heli (H1), day/night use. Arr/dep 192°-282° fr heli, slope 16% (H2), day/night use.	
CAUTION	Hosp building N and E of heli, unmarked P-lines and light standards S and W of heli.	

Canadian Aviation Regulations

Division III — General Operating and Flight Rules

For full listing please visit : <https://laws-lois.justice.gc.ca/eng/regulations/SOR-96-433/FullText.html#s-901.27>

Visual Line-of-sight

- **901.11 (1)** Subject to subsection (2), no pilot shall operate a remotely piloted aircraft system unless the pilot or a visual observer has the aircraft in visual line-of-sight at all times during flight.
- **(2)** A pilot may operate a remotely piloted aircraft system without the pilot or a visual observer having the aircraft in visual line-of-sight if the operation is conducted in accordance with a special flight operations certificate — RPAS issued under section 903.03.

Procedures

- **901.23 (1)** No pilot shall operate a remotely piloted aircraft system unless the following procedures are established:
 - **(a)** normal operating procedures, including pre-flight, take-off, launch, approach, landing and recovery procedures; and
 - **(b)** emergency procedures, including with respect to
 - **(i)** a control station failure,
 - **(ii)** an equipment failure,
 - **(iii)** a failure of the remotely piloted aircraft,
 - **(iv)** a loss of the command and control link,
 - **(v)** a fly-away, and
 - **(vi)** flight termination.
- **(2)** If the manufacturer of the remotely piloted aircraft system provides instructions with respect to the topics referred to in paragraphs (1)(a) and (b), the procedures established under subsection (1) shall reflect those instructions.
- **(3)** No pilot shall conduct the take-off or launch of a remotely piloted aircraft unless the procedures referred to in subsection (1) are reviewed before the flight by, and are immediately available to, each crew member.
- **(4)** No pilot shall operate a remotely piloted aircraft system unless the operation is conducted in accordance with the procedures referred to in subsection (1).

Site Survey

901.27 No pilot shall operate a remotely piloted aircraft system unless, before commencing operations, they determine that the site for take-off, launch, landing or recovery is suitable for the proposed operation by conducting a site survey that takes into account the following factors:

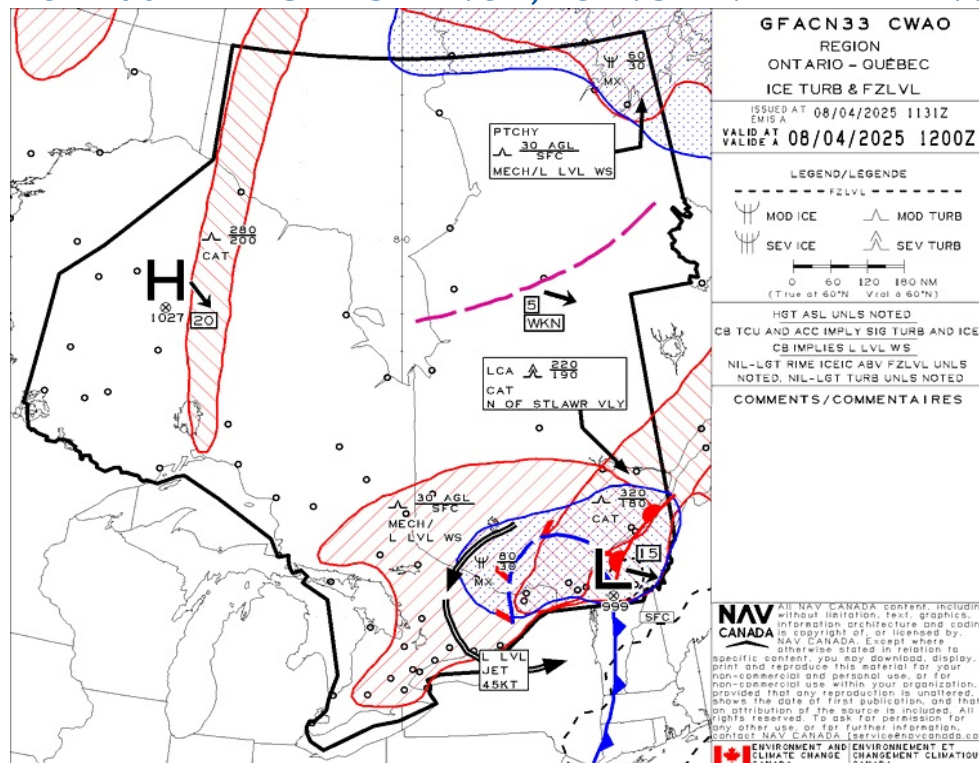
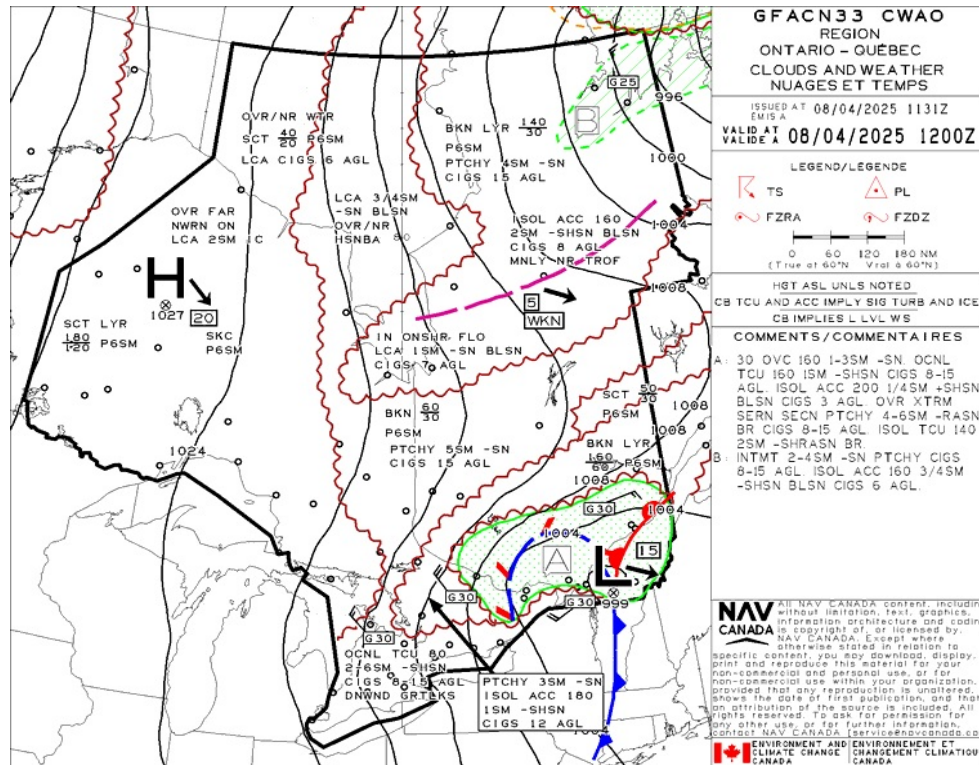
- **(a)** the boundaries of the area of operation;
- **(b)** the type of airspace and the applicable regulatory requirements;
- **(c)** the altitudes and routes to be used on the approach to and departure from the area of operation;
- **(d)** the proximity of manned aircraft operations;
- **(e)** the proximity of aerodromes, airports and heliports;
- **(f)** the location and height of obstacles, including wires, masts, buildings, cell phone towers and wind turbines;
- **(g)** the predominant weather and environmental conditions for the area of operation; and
- **(h)** the horizontal distances from persons not involved in the operation.

Operations at or in the Vicinity of an Aerodrome, Airport or Heliport

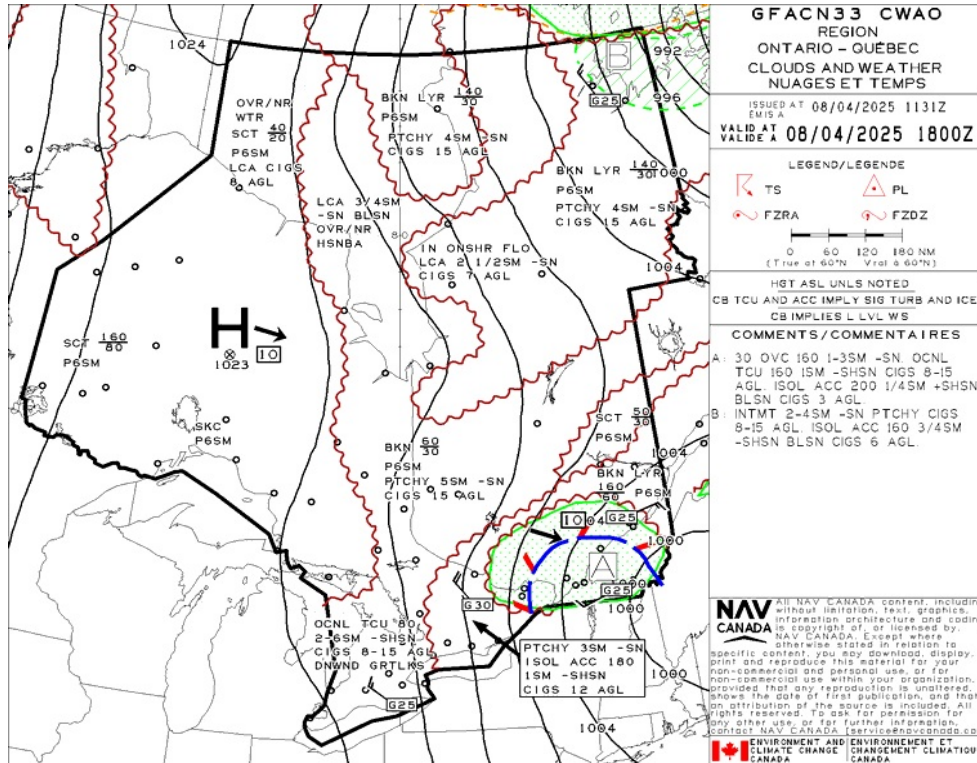
- **901.47 (1)** No pilot shall operate a remotely piloted aircraft at or near an aerodrome that is listed in the *Canada Flight Supplement* or the *Water Aerodrome Supplement* in a manner that could interfere with an aircraft operating in the established traffic pattern.
- **(2)** Subject to section 901.73, no pilot shall operate a remotely piloted aircraft at a distance of less than
 - **(a)** three nautical miles from the centre of an airport; and
 - **(b)** one nautical mile from the centre of a heliport.
- **(3)** No pilot shall operate a remotely piloted aircraft at a distance of less than three nautical miles from the centre of an aerodrome operated under the authority of the Minister of National Defence unless the operation is conducted in accordance with a special flight operations certificate — RPAS issued under section 903.03.

Records

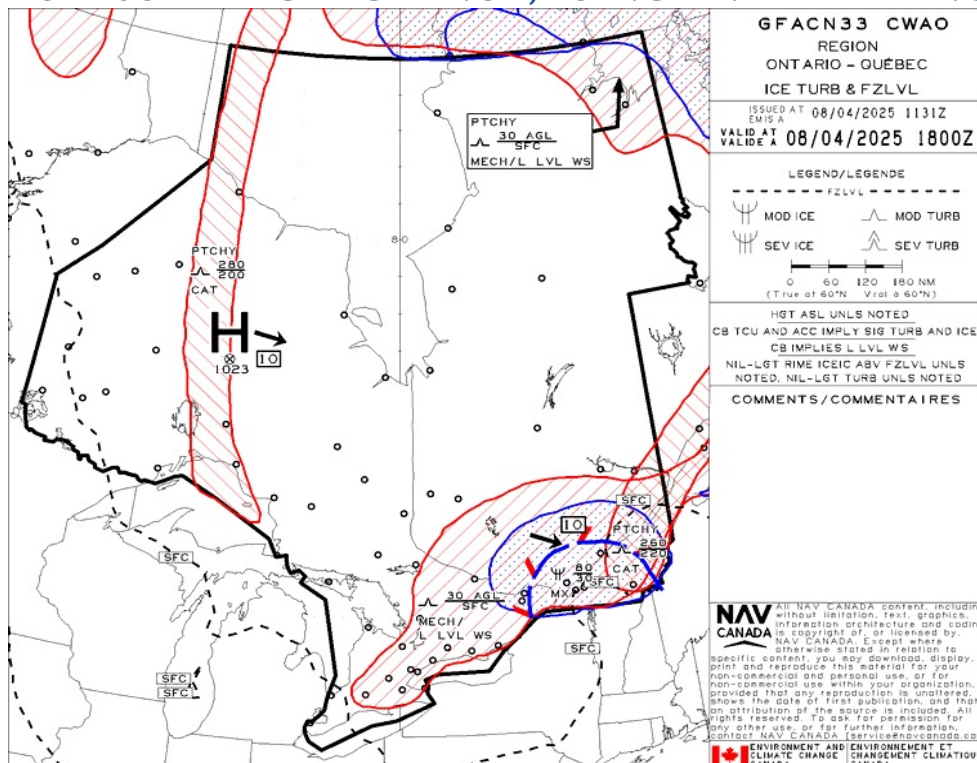
- **901.48 (1)** Every owner of a remotely piloted aircraft system shall keep the following records:
 - **(a)** a record containing the names of the pilots and other crew members who are involved in each flight and, in respect of the system, the time of each flight or series of flights; and
 - **(b)** a record containing the particulars of any mandatory action and any other maintenance action, modification or repair performed on the system, including
 - **(i)** the names of the persons who performed them,
 - **(ii)** the dates they were undertaken,
 - **(iii)** in the case of a modification, the manufacturer, model and a description of the part or equipment installed to modify the system, and
 - **(iv)** if applicable, any instructions provided to complete the work.
- **(2)** Every owner of a remotely piloted aircraft system shall ensure that the records referred to in subsection (1) are made available to the Minister on request and are retained for a period of
 - **(a)** in the case of the records referred to in paragraph (1)(a), 12 months after the day on which they are created; and
 - **(b)** in the case of the records referred to in paragraph (1)(b), 24 months after the day on which they are created.
- **(3)** Every owner of a remotely piloted aircraft system who transfers ownership of the system to another person shall, at the time of transfer, also deliver to that person all of the records referred to in paragraph (1)(b).



GFA Issue time + 06 hr - CLOUDS AND WEATHER

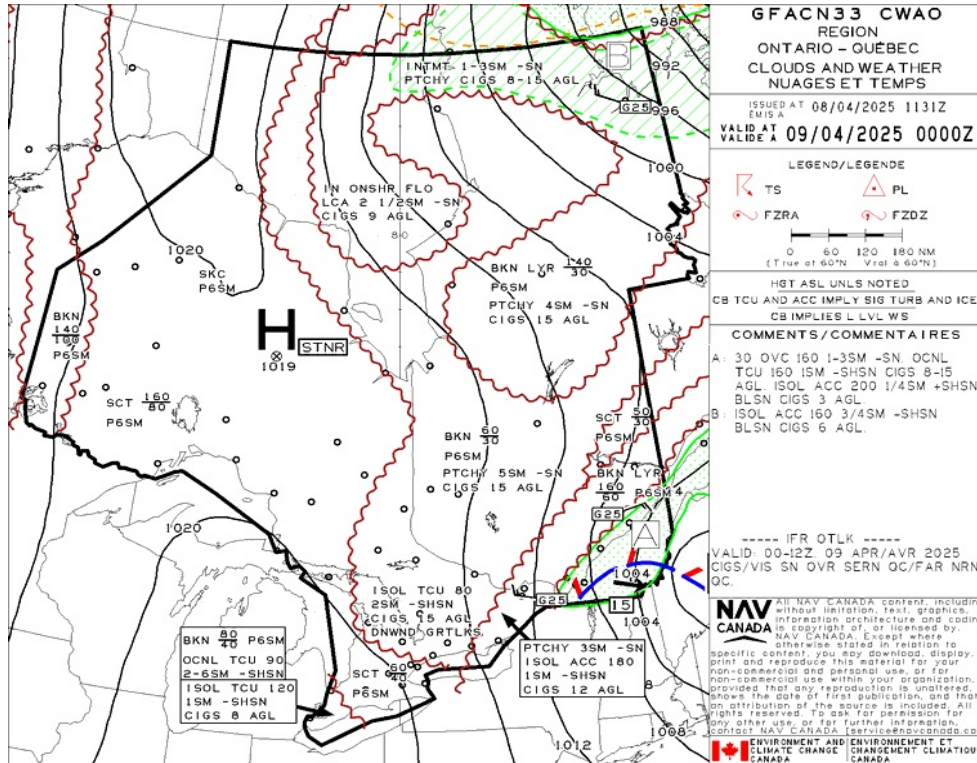


GFA Issue time + 06 hr - TURBULENCE, ICING AND FREEZING LEVEL

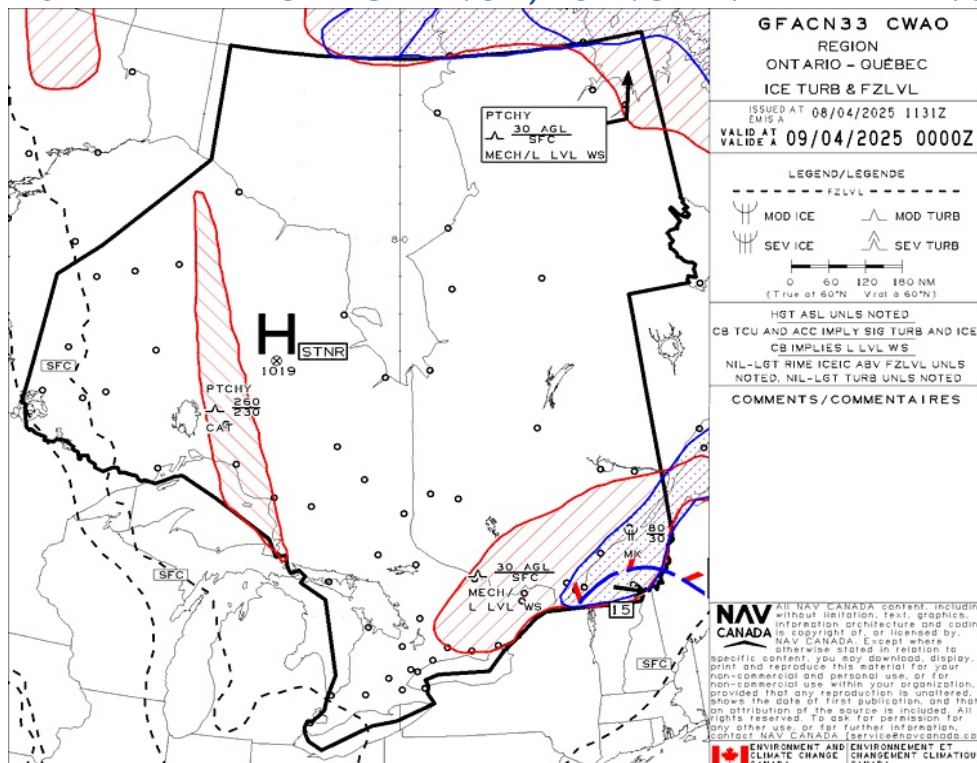




GFA Issue time + 12 hr - CLOUDS AND WEATHER



GFA Issue time + 12 hr - TURBULENCE, ICING AND FREEZING LEVEL





TORONTO (MISSISSAUGA CREDIT VALLEY HOSPITAL) - CPK6 - Cert

NOTAM

(G0859/25 NOTAMR G0851/25
Q) CZYZ/QCAAS/IV/B/AE/000/999/4638N08048W200
A) CYSB B) 2504091700 C) 2504102000
D) WED 1700-1800, THU 1900-2000
E) TORONTO CENTRE PERIPHERAL STATION (PAL)
135.5MHZ AT SUDBURY U/S)

(G0799/25 NOTAMN
Q) CZYZ/QOBT/IV/BO/AE/000/016/4341N07938W030
A) CYYZ B) 2504031224 C) 2504172359
E) TRIGGER NOTAM - AIP SUPPLEMENT 026/2025 WEF 03 APR 2025. CRANES
WITHIN 30 NAUTICAL MILES OF TORONTO/LESTER B. PEARSON INTL
AIRPORT)

(U0302/25 NOTAMR U0289/25
Q) CZYZ/QOLAS/IV/M/AE/000/007/4329N07940W005
A) CXXX B) 2502191742 C) 2505161900EST
E) CPK6 TORONTO (MISSISSAUGA CREDIT VALLEY HOSPITAL) (HELI)
OBST LGT U/S SMOKE STACK 432912N 0793944W (APRX 4.8NM SSE AD)
359FT AGL, 699FT AMSL.)

(G0296/25 NOTAMR G3450/24
Q) CZXX/QOEXX/IV/NBO/E/000/999/5245N09040W999
A) CZWG CZYZ B) 2502121911 C) 2505151600EST
E) AIRSPACE SECURITY WARNING ISSUED BY THE DEPARTMENT OF TRANSPORT
IN RESPONSE TO THE SECURITY SITUATION IN HAITI. CANADIAN AIR
OPR AND OWNERS OF ACFT REGISTERED IN CANADA ARE RECOMMENDED TO
NOT OPR BLW FL100 WITHIN HAITIAN AIRSPACE AND FIR PORT-AU-PRINCE
(MTEG) DUE TO POTENTIAL RISK FROM GANG ACT.)

(G0197/25 NOTAMN
Q) CZXX/QOEXX/IV/NBO/E/000/999/5245N09040W999
A) CZWG CZYZ B) 2501311445 C) 2504301400EST
E) AIRSPACE SECURITY WARNING ISSUED BY THE DEPARTMENT OF TRANSPORT
IN RESPONSE TO THE SECURITY SITUATION IN THE DEMOCRATIC REPUBLIC
OF CONGO. CANADIAN AIR OPR AND OWNERS OF ACFT
REGISTERED IN CANADA ARE RECOMMENDED NOT TO ENTER FIR KINSHASA
(FZZA) BELOW FL260 DUE TO RISK FROM ANTI-ACFT WEAPONRY.)

(G3517/24 NOTAMN
Q) CZYZ/QARXX/IV/NBO/E/000/999/4729N08055W999
A) CZYZ B) 2412260901 C) PERM
E) AMEND PUBLICATIONS:
AMEND MANDATORY IFR ROUTES: DELETE: CYKF H AND L ARR FR E A160
AND ABV RNAV TUKIR Q806 ILUSI ERBAL MAPEM DELETE: CYTZ H AND L
ARR FR N RNAV DUTUD KENLU KIVUN UKROX DELETE: CYTZ H AND L ARR
FR NW RNAV WALPP IKLUX KIVUN UKROX)



MILTON (DISTRICT HOSPITAL) - CPY2 - Cert

NOTAM

(G0859/25 NOTAMR G0851/25
Q) CZYZ/QCAAS/IV/B/AE/000/999/4638N08048W200
A) CYSB B) 2504091700 C) 2504102000
D) WED 1700-1800, THU 1900-2000
E) TORONTO CENTRE PERIPHERAL STATION (PAL)
135.5MHZ AT SUDBURY U/S)

(G0799/25 NOTAMN
Q) CZYZ/QOBT/IV/BO/AE/000/016/4341N07938W030
A) CYYZ B) 2504031224 C) 2504172359
E) TRIGGER NOTAM - AIP SUPPLEMENT 026/2025 WEF 03 APR 2025. CRANES
WITHIN 30 NAUTICAL MILES OF TORONTO/LESTER B. PEARSON INTL
AIRPORT)

(G0296/25 NOTAMR G3450/24
Q) CZXX/QOEXX/IV/NBO/E/000/999/5245N09040W999
A) CZWG CZYZ B) 2502121911 C) 2505151600EST
E) AIRSPACE SECURITY WARNING ISSUED BY THE DEPARTMENT OF TRANSPORT
IN RESPONSE TO THE SECURITY SITUATION IN HAITI. CANADIAN AIR
OPR AND OWNERS OF ACFT REGISTERED IN CANADA ARE RECOMMENDED TO
NOT OPR BLW FL100 WITHIN HAITIAN AIRSPACE AND FIR PORT-AU-PRINCE
(MTEG) DUE TO POTENTIAL RISK FROM GANG ACT.)

(G0197/25 NOTAMN
Q) CZXX/QOEXX/IV/NBO/E/000/999/5245N09040W999
A) CZWG CZYZ B) 2501311445 C) 2504301400EST
E) AIRSPACE SECURITY WARNING ISSUED BY THE DEPARTMENT OF TRANSPORT
IN RESPONSE TO THE SECURITY SITUATION IN THE DEMOCRATIC REPUBLIC
OF CONGO. CANADIAN AIR OPR AND OWNERS OF ACFT
REGISTERED IN CANADA ARE RECOMMENDED NOT TO ENTER FIR KINSHASA
(FZZA) BELOW FL260 DUE TO RISK FROM ANTI-ACFT WEAPONRY.)

(G3517/24 NOTAMN
Q) CZYZ/QARXX/IV/NBO/E/000/999/4729N08055W999
A) CZYZ B) 2412260901 C) PERM
E) AMEND PUBLICATIONS:
AMEND MANDATORY IFR ROUTES: DELETE: CYKF H AND L ARR FR E A160
AND ABV RNAV TUKIR Q806 ILUSI ERBAL MAPEM DELETE: CYTZ H AND L
ARR FR N RNAV DUTUD KENLU KIVUN UKROX DELETE: CYTZ H AND L ARR
FR NW RNAV WALPP IKLUX KIVUN UKROX)



BURLINGTON EXECUTIVE - CZBA - Reg

NOTAM

(G0859/25 NOTAMR G0851/25
Q) CZYZ/QCAAS/IV/B/AE/000/999/4638N08048W200
A) CYSB B) 2504091700 C) 2504102000
D) WED 1700-1800, THU 1900-2000
E) TORONTO CENTRE PERIPHERAL STATION (PAL)
135.5MHZ AT SUDBURY U/S)

(G0799/25 NOTAMN
Q) CZYZ/QOBT/IV/BO/AE/000/016/4341N07938W030
A) CYYZ B) 2504031224 C) 2504172359
E) TRIGGER NOTAM - AIP SUPPLEMENT 026/2025 WEF 03 APR 2025. CRANES
WITHIN 30 NAUTICAL MILES OF TORONTO/LESTER B. PEARSON INTL
AIRPORT)

(G0296/25 NOTAMR G3450/24
Q) CZXX/QOEXX/IV/NBO/E/000/999/5245N09040W999
A) CZWG CZYZ B) 2502121911 C) 2505151600EST
E) AIRSPACE SECURITY WARNING ISSUED BY THE DEPARTMENT OF TRANSPORT
IN RESPONSE TO THE SECURITY SITUATION IN HAITI. CANADIAN AIR
OPR AND OWNERS OF ACFT REGISTERED IN CANADA ARE RECOMMENDED TO
NOT OPR BLW FL100 WITHIN HAITIAN AIRSPACE AND FIR PORT-AU-PRINCE
(MTEG) DUE TO POTENTIAL RISK FROM GANG ACT.)

(G0197/25 NOTAMN
Q) CZXX/QOEXX/IV/NBO/E/000/999/5245N09040W999
A) CZWG CZYZ B) 2501311445 C) 2504301400EST
E) AIRSPACE SECURITY WARNING ISSUED BY THE DEPARTMENT OF TRANSPORT
IN RESPONSE TO THE SECURITY SITUATION IN THE DEMOCRATIC REPUBLIC
OF CONGO. CANADIAN AIR OPR AND OWNERS OF ACFT
REGISTERED IN CANADA ARE RECOMMENDED NOT TO ENTER FIR KINSHASA
(FZZA) BELOW FL260 DUE TO RISK FROM ANTI-ACFT WEAPONRY.)

(G3517/24 NOTAMN
Q) CZYZ/QARXX/IV/NBO/E/000/999/4729N08055W999
A) CZYZ B) 2412260901 C) PERM
E) AMEND PUBLICATIONS:
AMEND MANDATORY IFR ROUTES: DELETE: CYKF H AND L ARR FR E A160
AND ABV RNAV TUKIR Q806 ILUSI ERBAL MAPEM DELETE: CYTZ H AND L
ARR FR N RNAV DUTUD KENLU KIVUN UKROX DELETE: CYTZ H AND L ARR
FR NW RNAV WALPP IKLUX KIVUN UKROX)



MILTON (AFI) - CMH2 - Reg

NOTAM

(G0859/25 NOTAMR G0851/25
Q) CZYZ/QCAAS/IV/B/AE/000/999/4638N08048W200
A) CYSB B) 2504091700 C) 2504102000
D) WED 1700-1800, THU 1900-2000
E) TORONTO CENTRE PERIPHERAL STATION (PAL)
135.5MHZ AT SUDBURY U/S)

(G0799/25 NOTAMN
Q) CZYZ/QOBT/IV/BO/AE/000/016/4341N07938W030
A) CYYZ B) 2504031224 C) 2504172359
E) TRIGGER NOTAM - AIP SUPPLEMENT 026/2025 WEF 03 APR 2025. CRANES
WITHIN 30 NAUTICAL MILES OF TORONTO/LESTER B. PEARSON INTL
AIRPORT)

(G0296/25 NOTAMR G3450/24
Q) CZXX/QOEXX/IV/NBO/E/000/999/5245N09040W999
A) CZWG CZYZ B) 2502121911 C) 2505151600EST
E) AIRSPACE SECURITY WARNING ISSUED BY THE DEPARTMENT OF TRANSPORT
IN RESPONSE TO THE SECURITY SITUATION IN HAITI. CANADIAN AIR
OPR AND OWNERS OF ACFT REGISTERED IN CANADA ARE RECOMMENDED TO
NOT OPR BLW FL100 WITHIN HAITIAN AIRSPACE AND FIR PORT-AU-PRINCE
(MTEG) DUE TO POTENTIAL RISK FROM GANG ACT.)

(G0197/25 NOTAMN
Q) CZXX/QOEXX/IV/NBO/E/000/999/5245N09040W999
A) CZWG CZYZ B) 2501311445 C) 2504301400EST
E) AIRSPACE SECURITY WARNING ISSUED BY THE DEPARTMENT OF TRANSPORT
IN RESPONSE TO THE SECURITY SITUATION IN THE DEMOCRATIC REPUBLIC
OF CONGO. CANADIAN AIR OPR AND OWNERS OF ACFT
REGISTERED IN CANADA ARE RECOMMENDED NOT TO ENTER FIR KINSHASA
(FZZA) BELOW FL260 DUE TO RISK FROM ANTI-ACFT WEAPONRY.)

(G3517/24 NOTAMN
Q) CZYZ/QARXX/IV/NBO/E/000/999/4729N08055W999
A) CZYZ B) 2412260901 C) PERM
E) AMEND PUBLICATIONS:
AMEND MANDATORY IFR ROUTES: DELETE: CYKF H AND L ARR FR E A160
AND ABV RNAV TUKIR Q806 ILUSI ERBAL MAPEM DELETE: CYTZ H AND L
ARR FR N RNAV DUTUD KENLU KIVUN UKROX DELETE: CYTZ H AND L ARR
FR NW RNAV WALPP IKLUX KIVUN UKROX)



OAKVILLE (TRAFALGAR MEM HOSP) - CTM9 - Cert

NOTAM

(G0859/25 NOTAMR G0851/25
Q) CZYZ/QCAAS/IV/B/AE/000/999/4638N08048W200
A) CYSB B) 2504091700 C) 2504102000
D) WED 1700-1800, THU 1900-2000
E) TORONTO CENTRE PERIPHERAL STATION (PAL)
135.5MHZ AT SUDBURY U/S)

(G0799/25 NOTAMN
Q) CZYZ/QOBT/IV/BO/AE/000/016/4341N07938W030
A) CYYZ B) 2504031224 C) 2504172359
E) TRIGGER NOTAM - AIP SUPPLEMENT 026/2025 WEF 03 APR 2025. CRANES
WITHIN 30 NAUTICAL MILES OF TORONTO/LESTER B. PEARSON INTL
AIRPORT)

(U0302/25 NOTAMR U0289/25
Q) CZYZ/QOLAS/IV/M/AE/000/007/4329N07940W005
A) CXXX B) 2502191742 C) 2505161900EST
E) CPK6 TORONTO (MISSISSAUGA CREDIT VALLEY HOSPITAL) (HELI)
OBST LGT U/S SMOKE STACK 432912N 0793944W (APRX 4.8NM SSE AD)
359FT AGL, 699FT AMSL.)

(G0296/25 NOTAMR G3450/24
Q) CZXX/QOEXX/IV/NBO/E/000/999/5245N09040W999
A) CZWG CZYZ B) 2502121911 C) 2505151600EST
E) AIRSPACE SECURITY WARNING ISSUED BY THE DEPARTMENT OF TRANSPORT
IN RESPONSE TO THE SECURITY SITUATION IN HAITI. CANADIAN AIR
OPR AND OWNERS OF ACFT REGISTERED IN CANADA ARE RECOMMENDED TO
NOT OPR BLW FL100 WITHIN HAITIAN AIRSPACE AND FIR PORT-AU-PRINCE
(MTEG) DUE TO POTENTIAL RISK FROM GANG ACT.)

(G0197/25 NOTAMN
Q) CZXX/QOEXX/IV/NBO/E/000/999/5245N09040W999
A) CZWG CZYZ B) 2501311445 C) 2504301400EST
E) AIRSPACE SECURITY WARNING ISSUED BY THE DEPARTMENT OF TRANSPORT
IN RESPONSE TO THE SECURITY SITUATION IN THE DEMOCRATIC REPUBLIC
OF CONGO. CANADIAN AIR OPR AND OWNERS OF ACFT
REGISTERED IN CANADA ARE RECOMMENDED NOT TO ENTER FIR KINSHASA
(FZZA) BELOW FL260 DUE TO RISK FROM ANTI-ACFT WEAPONRY.)

(G3517/24 NOTAMN
Q) CZYZ/QARXX/IV/NBO/E/000/999/4729N08055W999
A) CZYZ B) 2412260901 C) PERM
E) AMEND PUBLICATIONS:
AMEND MANDATORY IFR ROUTES: DELETE: CYKF H AND L ARR FR E A160
AND ABV RNAV TUKIR Q806 ILUSI ERBAL MAPEM DELETE: CYTZ H AND L
ARR FR N RNAV DUTUD KENLU KIVUN UKROX DELETE: CYTZ H AND L ARR
FR NW RNAV WALPP IKLUX KIVUN UKROX)